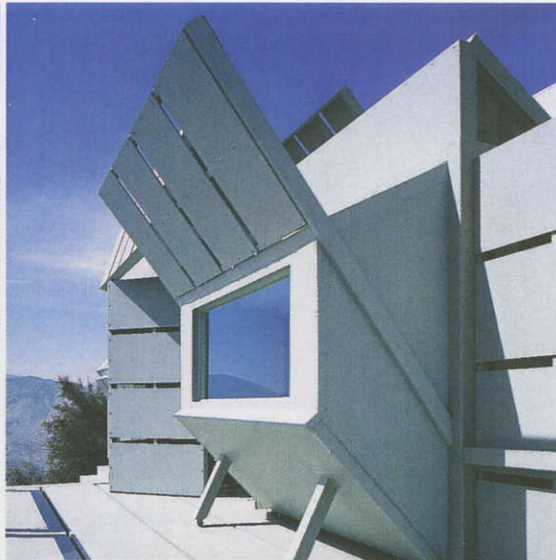


ON THE MARKET: MANDALAY, PETER GUBER'S ASPEN RANCH

# The Robb Report COLLECTION™

Real Estate and Home Design

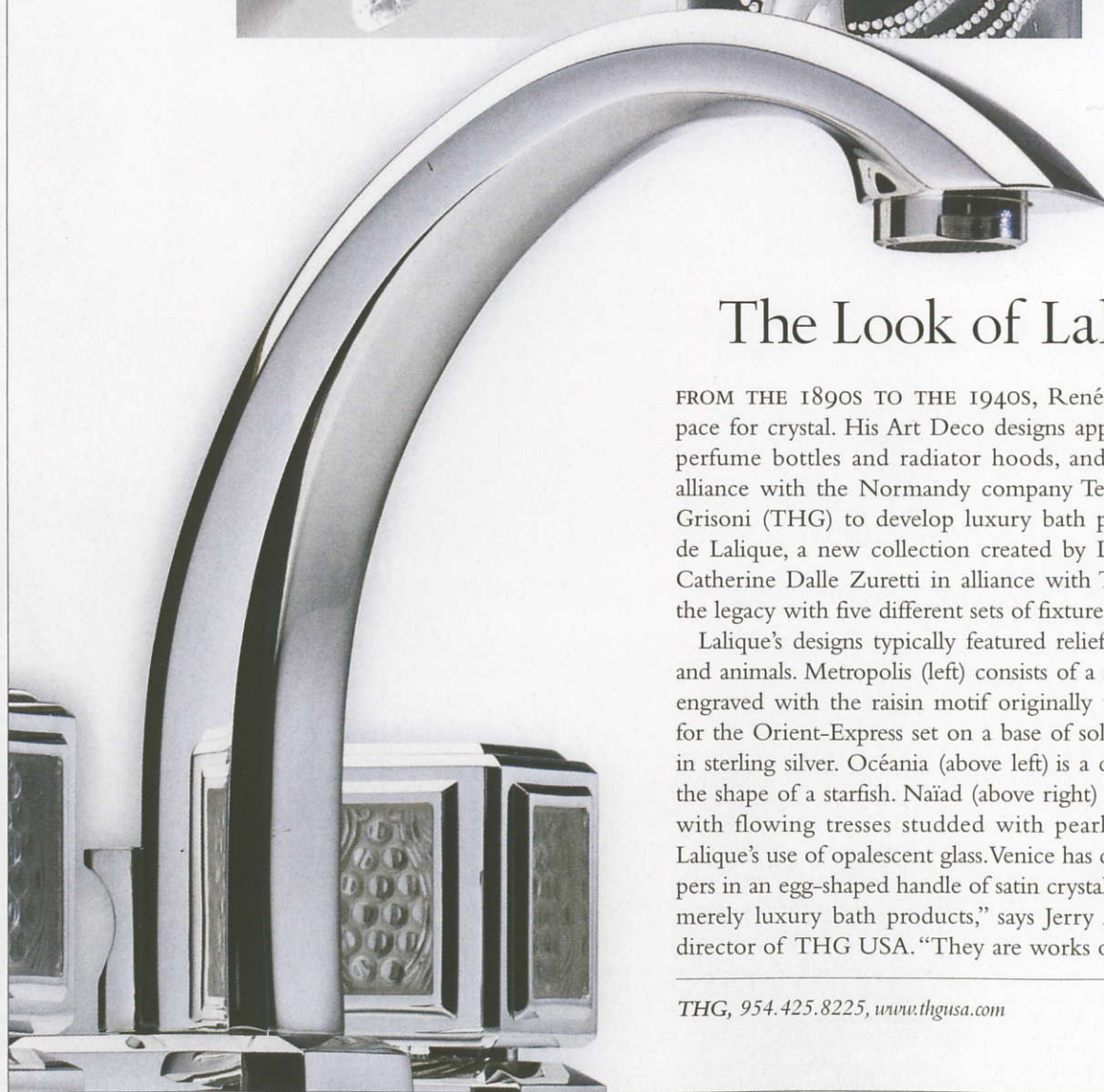
May 2003



## THIS SMART HOUSE

**SMART:** The House Monitor    **SMARTER:** Technology Under Wraps

**SMARTEST:** A Bathroom for the 21st Century



## The Look of Lalique

FROM THE 1890S TO THE 1940S, René Lalique set the pace for crystal. His Art Deco designs appeared on vases, perfume bottles and radiator hoods, and he formed an alliance with the Normandy company Tetard Haudiquez Grisoni (THG) to develop luxury bath products. Cristal de Lalique, a new collection created by Lalique designer Catherine Dalle Zuretti in alliance with THG, continues the legacy with five different sets of fixtures and fittings.

Lalique's designs typically featured relief figures, flowers and animals. Metropolis (left) consists of a square of crystal engraved with the raisin motif originally used by Lalique for the Orient-Express set on a base of solid brass finished in sterling silver. Océania (above left) is a crystal handle in the shape of a starfish. Naïad (above right) is a water sprite with flowing tresses studded with pearls, the result of Lalique's use of opalescent glass. Venice has carved grasshoppers in an egg-shaped handle of satin crystal. "These are not merely luxury bath products," says Jerry Abel, managing director of THG USA. "They are works of art."

THG, 954.425.8225, [www.thgusa.com](http://www.thgusa.com)